



Engineers Club NEWS

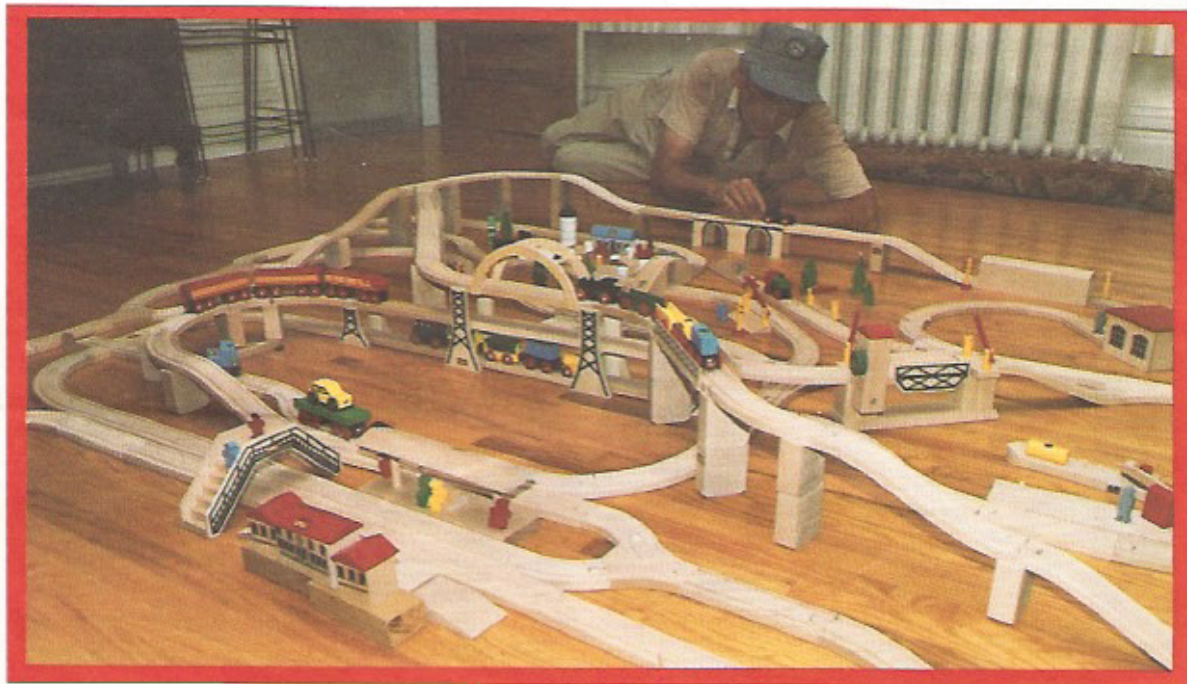
VOLUME 4 No. 1

800/558-6863

BRIO Scanditoy, Engineers Club, 6555 West Mill Road, Milwaukee WI 53218

Grandpa Won't Give Up *His* Train . . . but he loves to share it with his grandchildren!

We want you to meet BRIO Engineer Verster. He has been collecting BRIO for 50 years and brought his first train from Holland where he was born. (Do you remember when you got your first train?) He now has his railway set up all the time in his home in Canada. Every birthday he buys himself a new BRIO accessory. His grandchildren come over to his house to play with him, but he says *his* BRIO stays at *his* house.



We agree with him when he says BRIO is ". . . *the best toy available for kids on the market.*" (Kids of all ages, we might add!)

We like how he used the Bridge Supports and Suspension Bridge to make an elevated layout. Have you made any layouts with two and three levels of track? If so, please write us and tell us about them. We like your drawings and pictures too.

ESPECIALLY FOR BRIO ENGINEERS



Do you know that . . .

there are many names for a locomotive?
Engines are sometimes called *pigs* and *hogs*?

Can you guess what a *hogger* is?

Why do you think they called it an *iron horse* in the west?

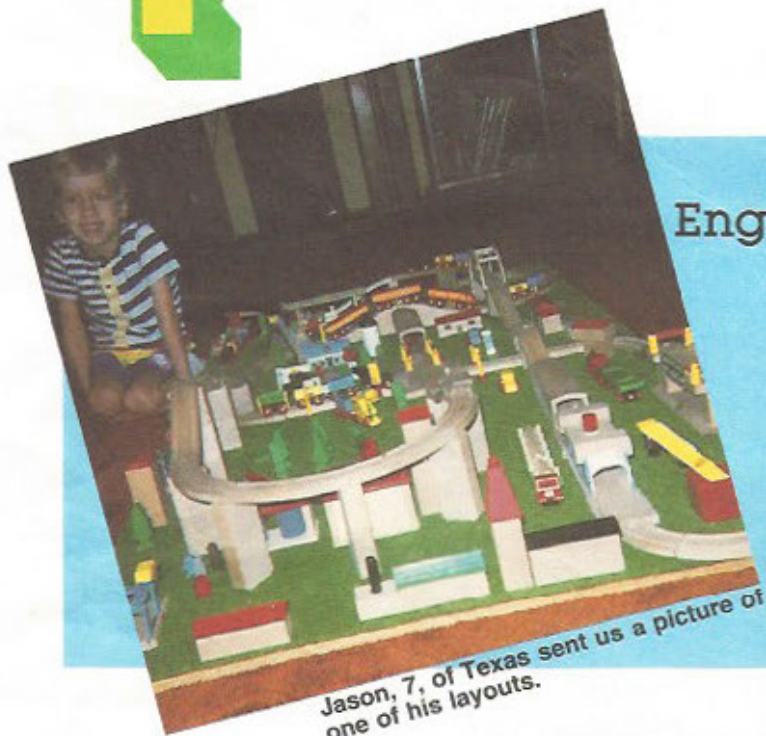
Engineers who keep us on track!

Steven Holman found "car" in our Word Search, Volume III No. 2.

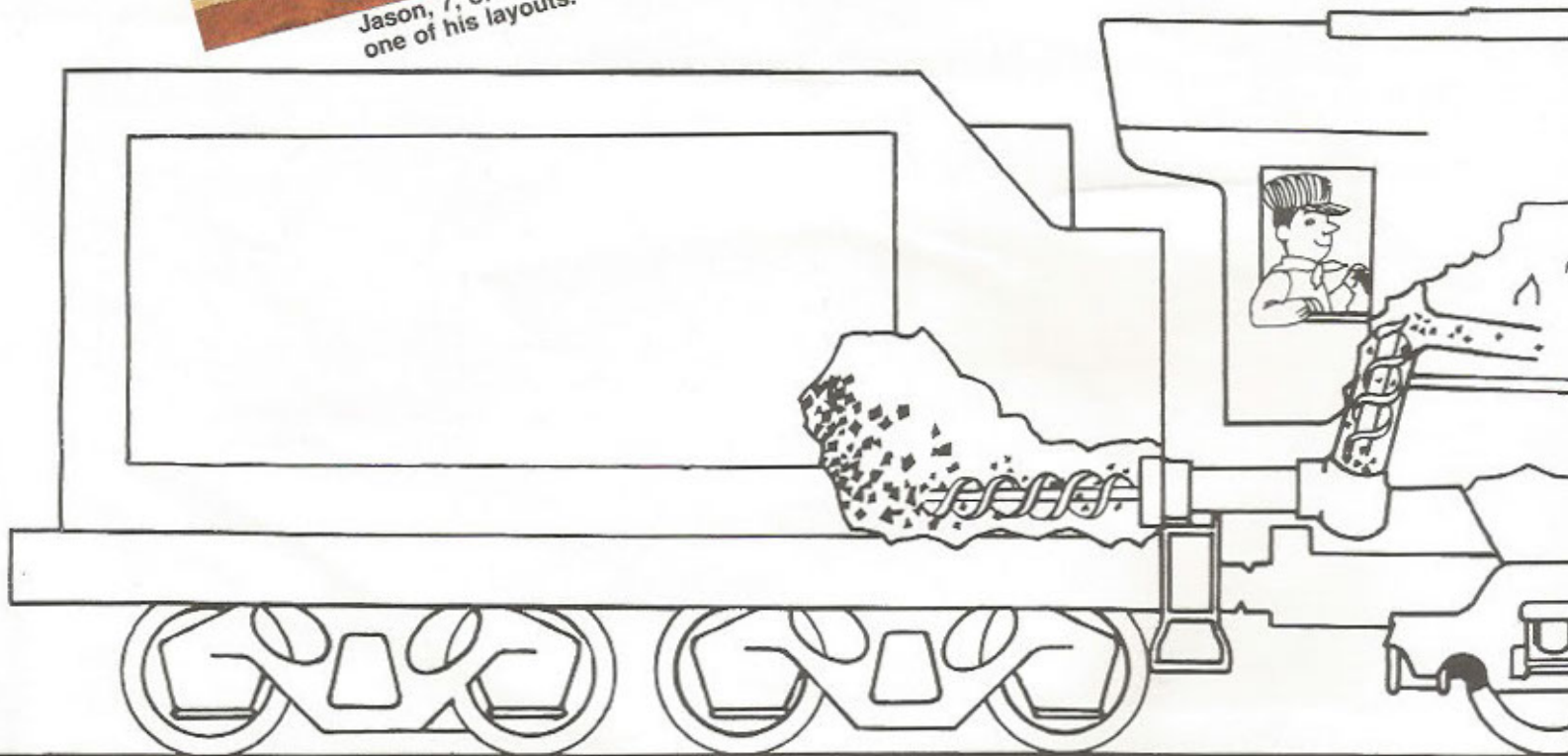
Aaron from Iowa would like corners like those shown on the cover of the Newsletter.

Thomas from New York sent us ideas for access track and cranes.

Paul from New Jersey laid out track in the shape of a heart for Valentine's Day.



Jason, 7, of Texas sent us a picture of one of his layouts.



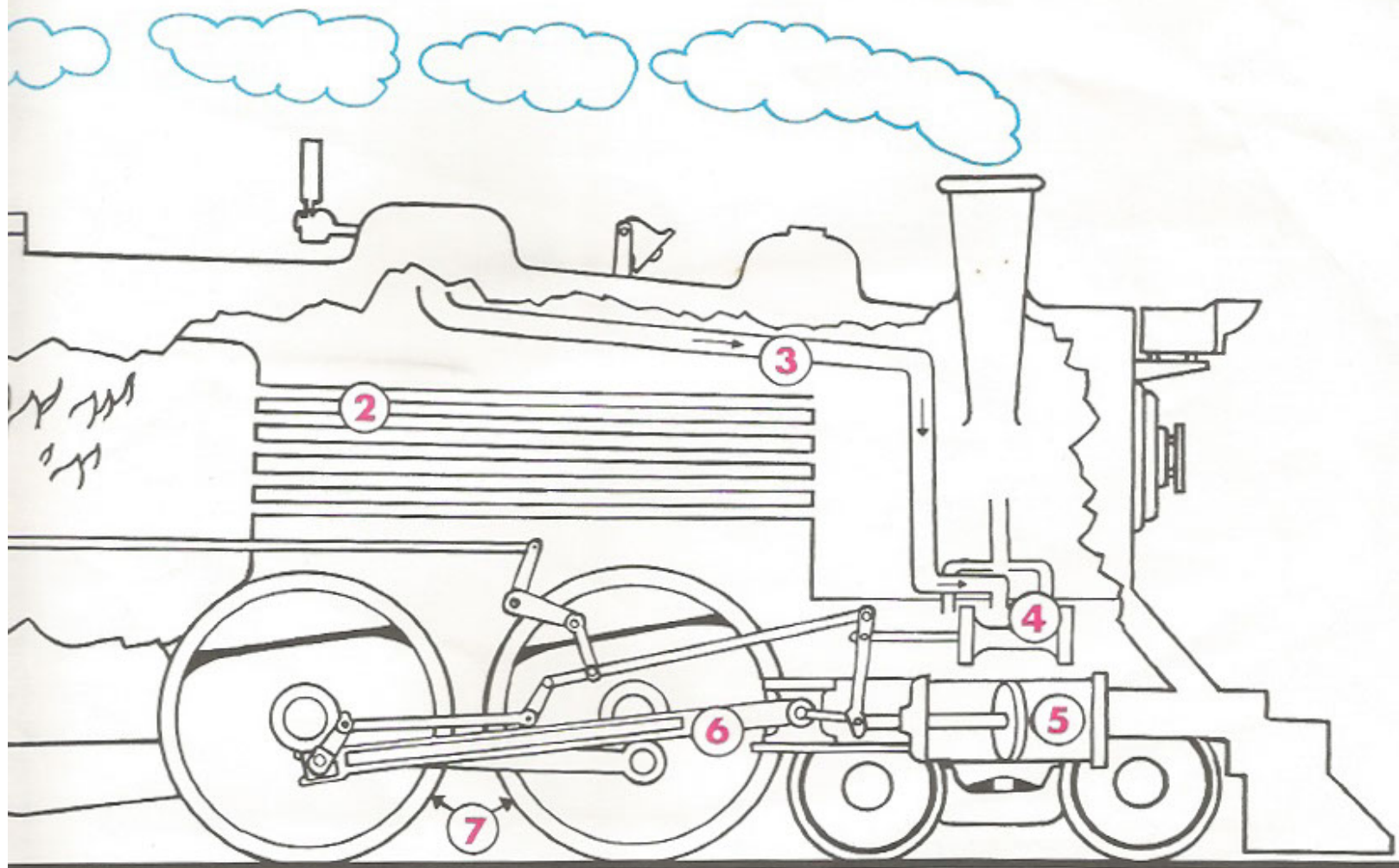
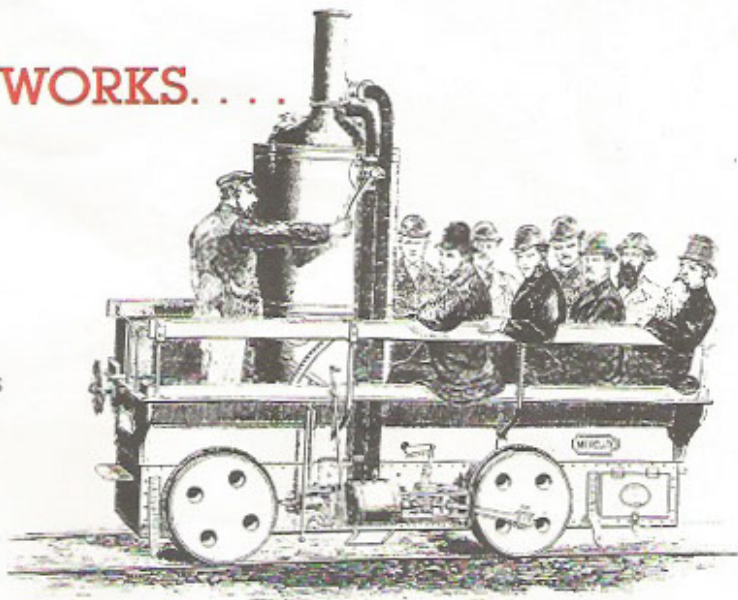
Behind the locomotive is a *tender* car that carries the coal for the engine. Can you fill the tender with black coal?



HOW A STEAM LOCOMOTIVE WORKS. . . .

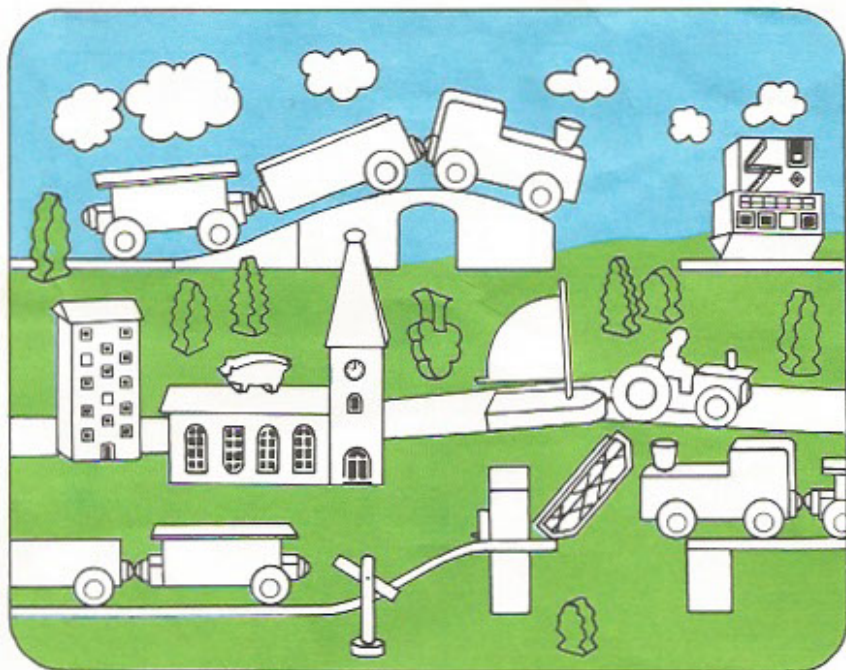
The first locomotives were run by horses and sails. Soon steam was found to work better—even though the first steam engines went only 4 miles per hour! (Do you remember how fast the bullet train travels?)

A steam locomotive uses steam to push the pistons that drive its wheels. Coal is burned in the firebox (1). It heats the water in the boiler (2) and turns it into steam. The steam is forced through the steam pipes (3) and into the cylinders (4). The steam pushes the piston back and forth (5). When the piston moves, the drive rod and connecting rod also move (6). They turn the driving wheels (7) and the locomotive chugs along the tracks. Can you find the smokestack, the bell, and the whistle?



Find the parts of the engine and then color your locomotive. Do you know that *choo choo* is the sound of the steam pushing the pistons back and forth?

What's *Funny*?



Circle ten funny things in this picture?
Can you find more?

More than one way to say *train*!

See if you can figure out how *train* is written (and spoken) in different languages. Draw lines between the language and the word.

| | |
|----------|----------|
| English | ki sha |
| French | tåg |
| German | treno |
| Japanese | el tren |
| Italian | der zug |
| Spanish | le train |
| Swedish | train |

Can you add more names and languages?

BRIO Engineers Club

LOCAL STATION MASTER

TO BRIO ENGINEER

HERE'S YOUR NEWSLETTER

